

HOKOWHITU SCHOOL

Newsletter

Friday 29th May 2026



Upcoming Events

1 st June	Public holiday for the King's Birthday. SCHOOL CLOSED
2 nd June	Year 3 Marae Visit
3 rd June	Year 2 Marae Visit
5 th June	11.30am - 2.30pm Year 5/6 Interschool Cross Country for selected ākonga House Meetings
9 th June	5.30pm Board meeting in the staffroom - everyone welcome. Come along if you are interested in finding out more about the role of a trustee
12 th June	School Assembly 9am - TKM
24 th June	Primary School Ki o Rahi Tournament
30 th June	School Production - More details to follow
3 rd July	End of Term 2
20 th July	Term 3 begins
5 th August	Year 5 Kind Hearts Trip

Do keep checking this calendar, as there will be new items added as soon as possible!



Update from the Principal



Talofa lava,

We acknowledge Somoan Language Week next week. Here is a greeting and a farewell to help you get by. Talofa lava - Hello , Tōfa soifua - Goodbye.

Remember we have a long weekend ahead. **King's Birthday — SCHOOL IS CLOSED MONDAY 1st June.** Although next week is a short one, we have a huge amount happening across our Kura:

- We welcome 4 new students to Ruma Whā. Hope you all have a fantastic first day. We are excited to have you part of our Hokowhitu whānau.
- Our Year 2 and 3 students are heading to **Te Hotu Manawa o Rangitāne o Manawatu Marae** (on Maxwells Line).
- Our top Year 5 and 6 runners will be representing Hokowhitu School at the **Manawatu Interschool Cross Country Championships** at the Ashurst Domain. Good luck to our athletes!
- Alongside these events, our tamariki will continue their dance lessons in preparation for the school production. High-quality Reading, Writing, and Maths learning continue to happen daily in our classrooms.

STRIVE Value Focus: Enthusiasm — Ngā Whakapuke

This will be our STRIVE focus over the coming weeks. There is already an incredible buzz around the school as our Kete begin learning their routines for the production. Emma from “Maximum Dance Zone” has been working hard with our classes, choreographing fantastic routines.

We have also seen a massive wave of energy at lunchtimes with students learning and practicing Ki o Rahi. It is a complex game, and our tamariki have shown immense enthusiasm and persistence to master the rules and strategies.

We truly value **Enthusiasm | Ngā Whakapuke** in our students. We want them to get involved, have fun, and enjoy being part of Hokowhitu School. Enthusiasm is a mindset; choosing a positive outlook and lifting each other up makes it much easier to tackle difficult situations, and it has a massive, positive effect on our overall wellbeing.

Strategic Consultation Survey

Thank you to everyone who has already completed our community survey. If you haven't had a chance yet, there is still time! You can access it directly via this link: [Survey Link](#). **The Survey will be closed off on Wednesday 3rd June.**

We highly value your input as we shape our future direction; your voice ensures our decision-making truly reflects our community. To say thank you for your time, everyone who completes the survey can enter their children into a draw to win one of several **\$20 Warehouse Stationery vouchers**. Please take a few minutes to share your thoughts with us!

Thank you for your continued support. I hope you all have a safe, wonderful long weekend with your whānau.

Tōfa soifua

Reece Hawkins

Tumuaki / Principal



SCHOOL PRODUCTION ART WORK COMPETITION

This term, we have run a schoolwide poster competition to find some stunning artwork to advertise Hokowhitu's school production; "Under One sky".

We had 103 entries and everyone that entered will receive a strive voucher for their effort. The production committee (featured a teacher from each kete) judged the 7 finalists and selected a winner.

Congratulations to the finalists:

Georgia



Annie



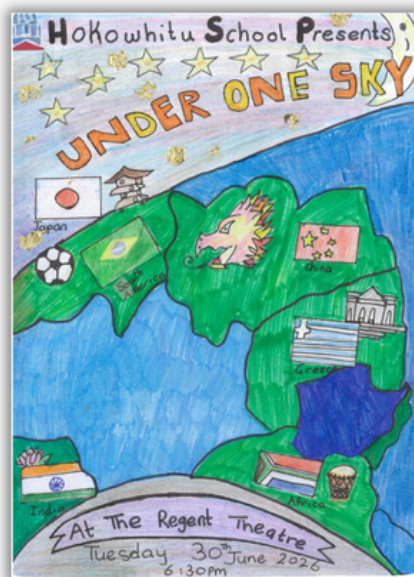
Emelia



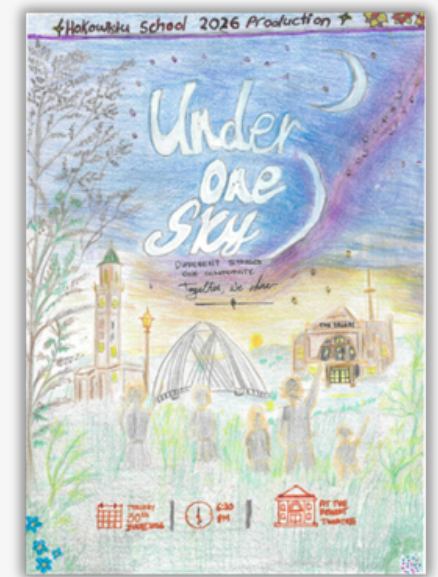
Joy



Zareesh



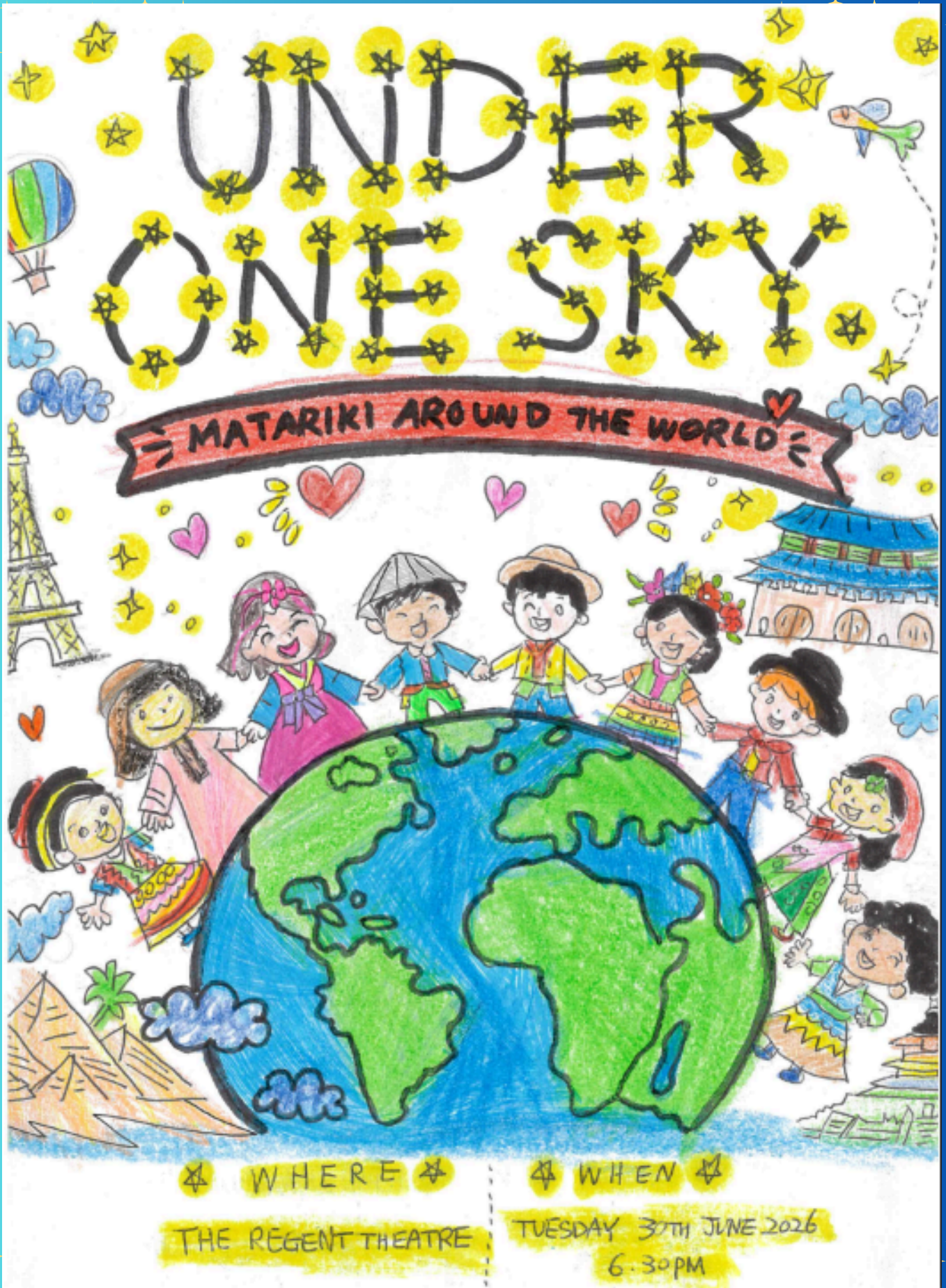
Hanna



WELL DONE!

Congratulations to our overall winner:

Yoona



CHOIR

This morning at assembly, we were treated to a wonderful performance by the Hokowhitu School Choir. They performed Star Gazing by Myles Smith. Thank you to the choir for sharing their talents with us and to Mrs Lovegrove for all the hard mahi she puts into the choir.



ATAWHAI AWARDS

At this morning's assembly the following people were recognised for showing atawhai (kindness) towards others.

TKW: Oaklyn- Oaklyn you come in every morning with a smile on your face. You always use your manners, help others, look after our classroom and your friends. Thank you for showing atawhai.

TKP: Nevaeh-Leigh - Nevaeh-Leigh you are a natural kaitiaki akomango. You care for our classroom, removing rubbish and recycling, tidying away pencils and gluesticks, straightening chairs and sweeping up crumbs. You do all this mahi without needing to be asked. You notice when others around you require help, and assist them in a caring and respectful way. When jobs arise involving helping kaiako or other ākonga your arm always shoots up to volunteer assistance. We appreciate all the ways that you show atawhaitanga in our kete Nevaeh-Leigh. Ka pai tō mahi!

TKM: Reeyana - Reeyana is a true joy to have around, always brightening the kete with her constant smile and calm, quiet demeanor. Remarkably mature and thoughtful of others, she maintains wonderfully friendly interactions with her peers and shows a natural atawhai to those around her. Her gentle presence and big heart make her a deeply valued member of our kete. He whetu koe.

TKA: Eli - Eli you are a caring and kind member of TKA. You always come in with a smile in the mornings and your classmates are always glad to see you. You are a role model with your classwork and behaviour. From things such as lining up without pushing to leading your group during fitness rotations, you always approach things calmly and with kindness. You work well in group work and give everything 100% effort. We appreciate you Eli.

TKT: Emelia - Emelia you bring so much energy and warmth to our kete every single day. Your kind nature shines through in everything you do, especially in the way you include others and make everyone feel good. We love how you give everything a go, tackling new learning and challenges with a great big smile. You consistently show Atawhai by looking out for your peers and treating everyone around you with genuine care and respect. Thank you, Emelia, for showing Atawhai and making our classroom a brighter, happier place for everyone.

Achievement Awards



Te Kete Wakahuia

Ira - For super reading. Tino pai.

Thomas - For fantastic progress with your letter formation. Kā rawe.

Charlie - For being a great helper at oral language time. Kā rawe.

Madeline - For trying hard to learn the sounds. Tino pai.

Finn - For blending sounds to read words. Tino pai.

Leia - For reading with increasing fluency. Kā rawe.

Te Kete Pounamu

Henry - For a fabulous improvement with recording your maths thinking!

Saanvika - Wow Saanvika, what an amazing writer you are becoming - Keep it up!

Manaaki - For demonstrating the 'S' in STRIVE. You are stepping up and showing wonderful mat manners. Ka pai!

Thomas - For presenting your pepeha off by heart and with pride. Tino pai!

Ezra - For demonstrating 'beside' on the mat during whole-class maths. Ka mau te wehi!

Maddie - For awesome singing during our waiata practice, preparing for our marae visit. Kei runga noa atu!

Te Kete Manawa

Harrison W - Good effort made with his informative writing about The Statue of Liberty.

Ansh - For being a focused learner in Maths and demonstrating great self-management skills.

Rhyan - For an increasing focus in maths and asking for clarification if unsure.

Jack - For recalling previously learned ideas and sharing this with others.

Riley - For your active engagement in our drama sessions.

Navya - For working hard to look at the teacher during instruction time.

Neave - For listening carefully and being able to make shapes with a range of areas.

Mila - Great work showing multiplication can be groups of and repeated addition.

Lusion - For an improved effort and attitude in literacy.

Te Kete Aronui

Clyde V - For identifying right, acute and obtuse angles in geometry.

Sadie - For writing a great report on the adventures of Tupaia.

Emma - For your hard work in maths and showing kindness always.

Darcy T - For having a positive attitude and being willing to learn from others.

Aaden - For great work on your information report about on Sea Turtles.

Axel - For an excellent information on Sharks and a great improvement in spelling.

Conor - For improved focus and effort in class.

Delena & Ivy - For a good improvement in your spelling.

Te Kete Tangaroa

Hakaraia - Improvement in RnR and willingness to help others.

Paxton - Creating an excellent poster design.

James - Being focused during learning.

Jacob - For making regular contributions during reading and for being focused during discussions.

Georgia - For being enthusiastic about all your learning and for giving everything your best effort.

Shahzain - For always being prepared for learning throughout the day and for facing everything with a smile.

K-J - For fantastic reading this year. It is great to see you enjoying 6 or 7 chapter books from the library.

Ranvir - For outstanding work on decimal fractions in maths this week.

Rohan - For an amazing effort on your Samoan Language Week poster.



Sport

Term 1 Wed 4/2-Thur 2/4	Term 2 Mon 20/4-Fri 3/7	Term 3 Mon 20/7-Fri 25/9	Term 4 Mon 12/10-Fri 16/12
--	--	---	---

Sports you will register through **kindo** to play for Hokowhitu School -

<https://shop.kindo.co.nz/>

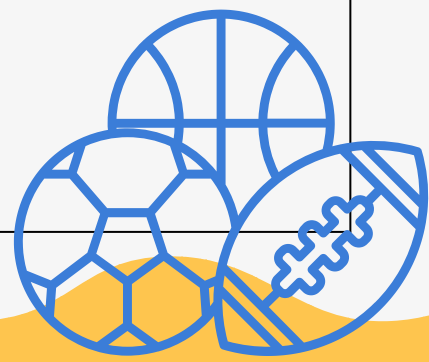
*Uniform hire is required for all sports except Netball

COACHES - If you can, please send through a photo of the players of the day for the newsletter. We love to share the kids achievements! office@hokowhitu.school.nz

<p>Badminton - yrs 5 and 6 (Registration - kindo beginning term 1)</p> <p>Summer Hockey - All yrs (Registration - kindo beginning term 1)</p> <p>Netball - All yrs (Registration -kindo beginning term 1)</p> <p>T-Ball - yrs 1-3 (This team is continued from Term 4)</p> <p>*All Term 1 Sports registration's are now closed</p>	<p>Basketball - yrs 3-6 (Registration - kindo term 1)</p> <p>Winter hockey - All yrs (Registration - kindo term 1)</p> <p>Table Tennis - yrs 4-6 (Registration - kindo term 1)</p> <p>*All Term 2 Sports registration's are now CLOSED</p>	<p>Badminton - yrs 4-6 (Registration - kindo term 2)</p> <p>Basketball and winter hockey carry on this term.</p>	<p>T-Ball - yrs 1-3 (Registration - kindo term 3)</p> <p>Summer hockey - All yrs (Registration - kindo term 3)</p> <p>Summer soccer - All yrs (Registration - kindo term 3)</p> <p>Volleyball - yrs 4-6 (Registration - kindo term 3)</p> <p>Futsal - yrs 3-6 (Registration - kindo term 3)</p> <p>Netball - All yrs (Registration - kindo term 3)</p> <p>Touch - All yrs (Registration - kindo term 3)</p>
---	--	--	--

Sports available through outside agencies
See this link for ALL sports in the Manawatu -
<https://www.sportmanawatu.org.nz/findasport>

<p>Junior rugby https://www.manawaturugby.co.nz/community-rugby-1/junior-1</p> <p>Winter soccer https://www.centralfootball.co.nz/competitions-1/fixturesresults-1/manawatu-2</p>			<p>Tennis https://clubspark.kiwi/TennisManawatu</p> <p>Cricket www.sporty.co.nz/mca</p>
--	--	--	---



Important Information for Parents & Guardians

- Please respect the privacy of all ākonga when taking photos or videos.
- Please do not publish any photos containing other children from any school event.
- Please look out for kete newsletters - these include additional specific dates/events for that kete.

Ways to Contact The Office When Your Child Will Be Late Or Absent



Email

office@hokowhitu.school.nz



Phone

(You can also leave a voicemail)
06 357 9667 School cell phone
(txt or phone) - 027 357 9021



App

See how to download the App here:
<https://hokowhituprimary.apps.school.nz/>

FREE COUNSELLING AT SCHOOL

In partnership with Gumboot Friday, your child can receive up to four free counselling sessions - right here at school. This support can only be accessed once per child.

I'm Counsellor Dave. I've worked with children of all ages since 2007, supporting tamariki with anxiety, anger, low mood, and big feelings in a safe and caring way.

Sessions take place at school, but bookings must be made by whānau through Naomi Thompson, Learning Support Coordinator.

To arrange support for your child in 2026. Please contact Naomi Thompson n.thompson@hokowhitu.school.nz for more information and the referral documents.

<https://www.talkingworks.co.nz/listing/dave-dawber/>



JOIN THE EGG PROJECT FUNDRAISER TODAY!

FREE RANGE DOZEN - \$9.50
CERTIFIED ORGANIC DOZEN \$11.50

SET UP A SUBSCRIPTION OR ORDER YOUR EGGS ON THE WEBSITE BEFORE TUESDAY AND THEY WILL BE READY FOR COLLECTION FROM THE OFFICE ON THURSDAY AFTER SCHOOL. WE WILL GIVE THE SCHOOL BACK \$1.00 PER DOZEN.

YOUR UNIQUE CODE SCH-003

WWW.THEEGGPROJECT.CO.NZ

The Egg Project

- Jump onto the website www.theeggproject.co.nz
- Click up the top on the blue bit where it asks if you have a unique code.
- Use the code SCH-003 at to sign up, select what eggs you want as a one off or set up a subscription, confirm and pay.
- If you need help with anything—ordering, subscriptions, or just want to talk eggs—flick me an email. I'm just sitting here chatting with the eggs anyway (they're great listeners, but not so hot on tech support). Pip@theeggproject.co.nz

Hokowhitu School has fundraised more than \$3862 so far by having whānau purchase these eggs. Along with being so fresh, the eggs are also much cheaper than the equivalent at the supermarket.



Community Notices



IN ASSOCIATION WITH **PALMY**

PLATINUM SPONSOR **TOYWORLD**
where the best toys come from

2026 Palmerston North Brick Show

BLOCK OUT YOUR WEEKEND THIS KING'S BIRTHDAY!

Kind Hearts

<p>SATURDAY 30 MAY 9AM - 4.30PM</p>	<p>SUNDAY 31 MAY 9AM - 4.30PM</p>	<p>ARENA 3, PASCAL ST, PALMERSTON NORTH</p> <p>CHILD \$5 ADULT \$7 FAMILY PASS \$20 DOOR SALES EFTPOS AVAILABLE</p>	<p>WELL-LUG A WELLINGTON LEGO® USER GROUP EVENT</p> <p>ONLINE TICKETS AVAILABLE WELL-LUG.CO.NZ</p> <p>MEMBER OF WELL-LUG</p>
--	--	--	--



NEW ZEALAND RED CROSS BOOK SALE

King's Birthday Weekend 2026

Friday 29 May, 10am-8pm
Saturday 30 May, 10am-6pm
Sunday 31 May 10am-4pm
Monday 1 June, 10am-2pm

Barber/ Bell Hall

Waldegrave Street, Palmerston North

100,000+ books Games, DVDs, jigsaws, Music, comics and more!



All proceeds go to New Zealand Red Cross in their mission to help improve the lives of vulnerable people here in New Zealand and overseas.




Manawatu's Matariki Winter Festival

Month-Long Light Festival
27 June to 31 July 2026

Feilding aDistrict

- **27 June**
Grand Launch
 Saturday 27th June 5pm to 7pm
 Feilding town Square. FREE ENTRY
- **25 July**
Drone Light Show
 Saturday 25th July 5pm to 7pm
 Manfeild Oval. GOLD COIN DONATION
- **PLUS A MONTH of Events & Activities**
 Community Light Project
 Matariki Star Hunt
 Business Window Lighting Trail
 Hospitality Challenge:
 People's Choice - The Brightest Dish
 Matariki Farmers Market 10 July
 Late Night Thursdays & More to come!

COMING TO TOWN!




JAMES RUSSELL

FREE EVENT!

The First Chapter Tour

Where: Palmerston North Library
When: 3:45pm, Wednesday, June 17



Meet author James Russell and hear him read the first chapter of his critically acclaimed new junior fiction novel!



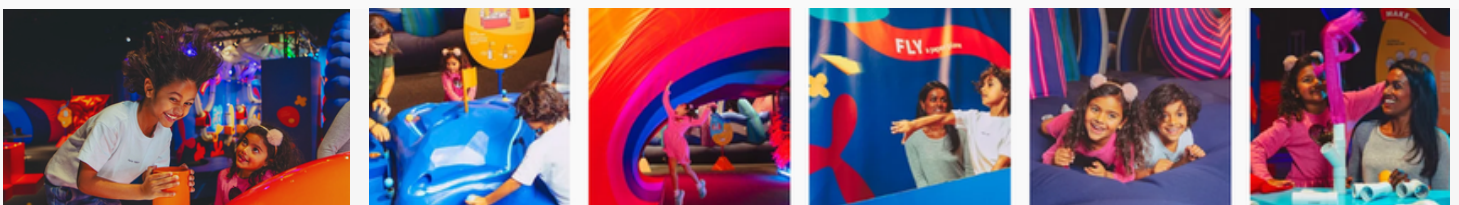
For curious kids of all ages, experience the science of aerodynamics and the amazing invisible elemental force of air through 10 interactive exhibits.

At **Air Playground**, curious kids and families have fun with air - an invisible elemental force. Explore the science of aerodynamics through experimental play: float objects in mid-air, release material in a fast-flowing airstream and launch your own paper plane design.

Learn about the complex physics of air by challenging your friends to an 'aircade' game, tinkering with the speed and direction of airflow or collaborating to create a spinning, flapping air show!

Developed by a team of Science experts from Museums Victoria, this exhibition is jam-packed with hands-on interactive experiences for the whole whānau.

Don't miss the opportunity to embark on a journey of scientific exploration, discovery and fun - let science blow you away!



Air Playground

Saturday, 16 May 2026, 10:00 am -
 Sunday, 11 October 2026, 5:00 pm

Te Manawa Museum
 326 Main Street, Palmerston North, 4410, Aotearoa New Zealand (map)

ngā tīketi | tickets:

- Child (3-17 years) \$10.00
- Adult \$5.00 (Community Services Card-holders free)
- Family 2+2 or 1+3 \$25.00 (additional children \$5.00)
- 2 and under free

Please ask us about discounts and pricing for large groups and school visits.